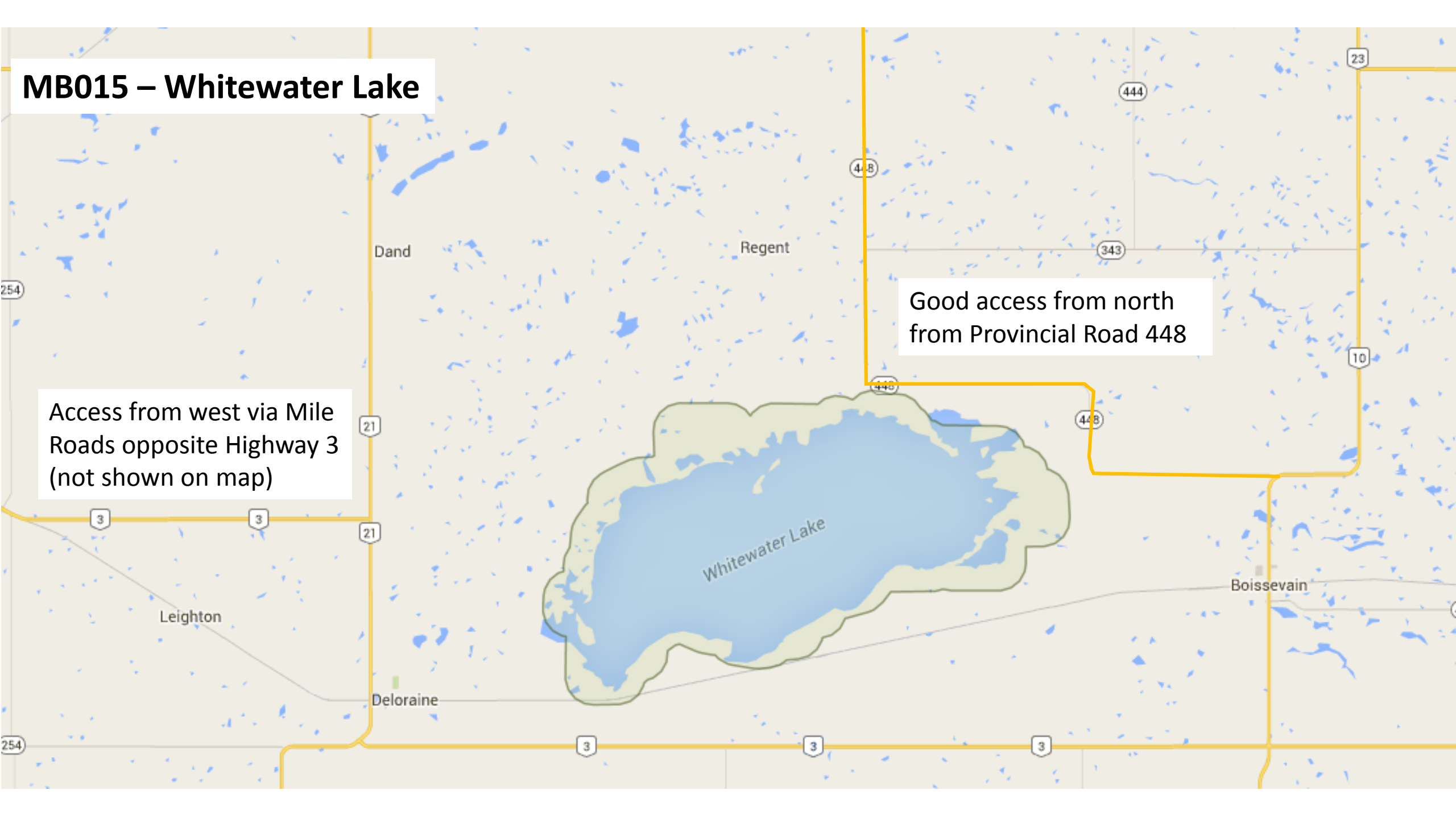


MB015 – Whitewater Lake

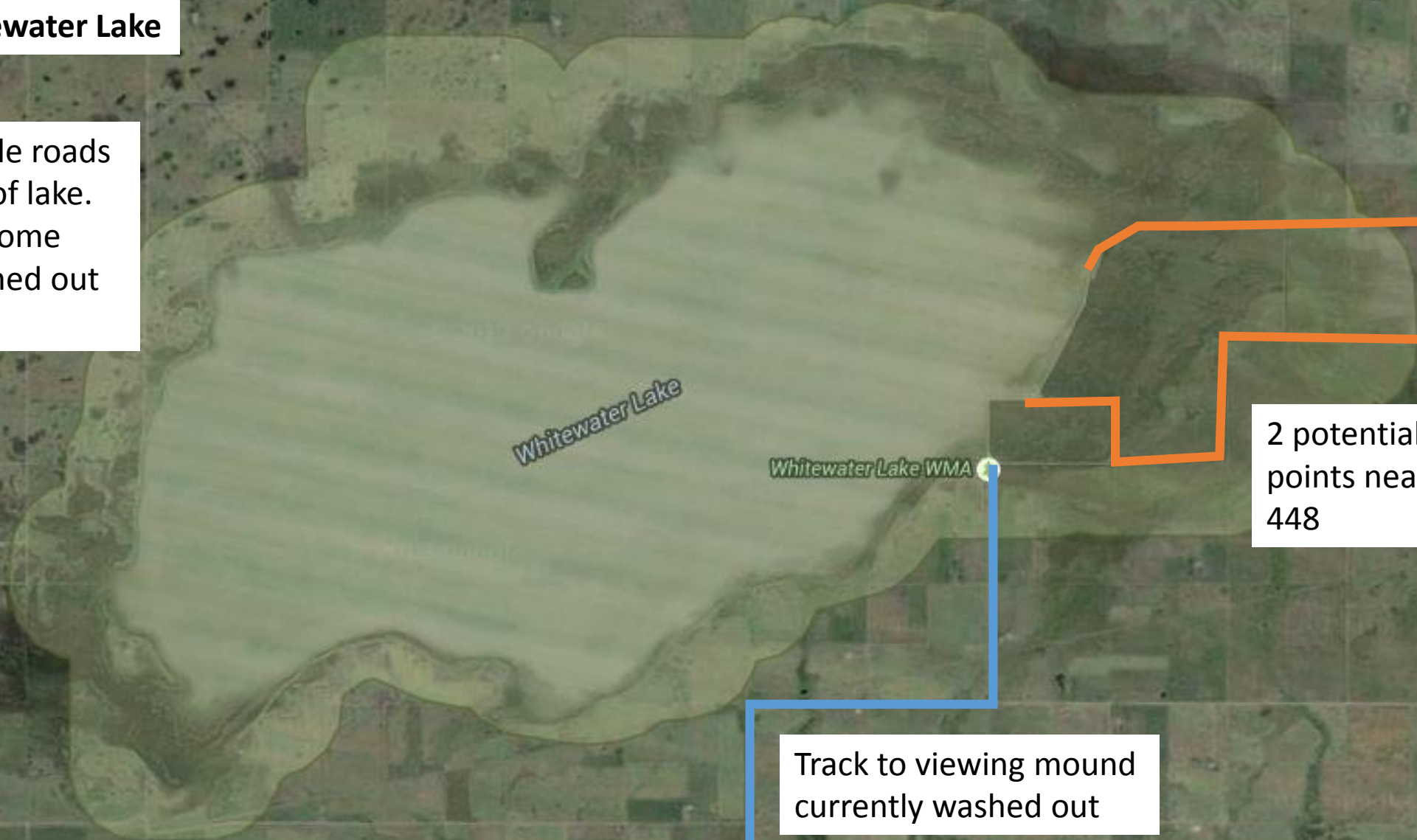
Access from west via Mile Roads opposite Highway 3 (not shown on map)

Good access from north from Provincial Road 448



MB015 – Whitewater Lake

Use western mile roads to access west of lake.
Be aware that some have been washed out in recent years.



2 potential access points near bend of PR 448

Track to viewing mound currently washed out

**MB015 – Whitewater Lake
Western Access**

3

21

Numerous mile roads lead close to the IBA boundary. Be aware that some of these roads are under water in 2015

